



KuDymond

HIGH EFFICIENCY POLY MODULE

CS3U-350 | 355 | 360 | 365P-AG

(1000 V / 1500 V)

Canadian Solar's KuDymond CS3U-P-AG module is a high power double-glass module with aluminium frame, using industry leading poly-PERC cell technology and the innovative LIC (Low Internal Current) module technology.

The KuDymond poly-PERC modules can reach up to 365 W with the following unique features:

- **Higher** power classes for equivalent module sizes
- **High** module efficiency up to 18.40 %
- **LOW** hot spot temperature risk
- **LOW** temperature coefficient (Pmax): $-0.37 \% / ^\circ\text{C}$
- **LOW NMOT** (Nominal Module Operating Temperature): $42 \pm 3 ^\circ\text{C}$



Low NMOT: $42 \pm 3 ^\circ\text{C}$
Low temperature coefficient
(Pmax): $-0.37 \% / ^\circ\text{C}$



Lower hot spot temperature



Minimizes micro-cracks and
prevents snail trails



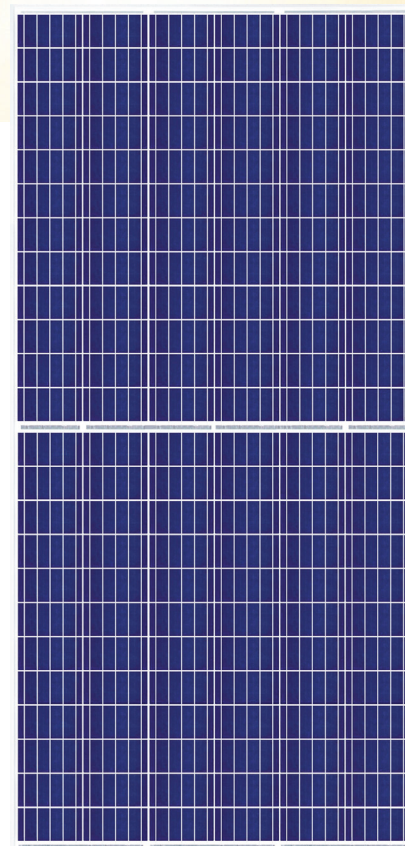
Heavy snow load up to 8100 Pa,
wind load up to 4000 Pa*



Fire Class A and Type 3 / Type
13 certified according to IEC
61730-2 / MST 23 and UL 1703



Low BoS cost with 1500 VDC
system voltage



*Transparent doubleglass module
can be provided upon request.



linear power output warranty



product warranty on materials
and workmanship

PRODUCT CERTIFICATES*

IEC 61215 / IEC 61730: VDE / CE (pending)

* If you need specific product certificates, and if module installations are to deviate from our guidance specified in our installation manual, please contact your local Canadian Solar sales and technical representatives.

CANADIAN SOLAR INC. is committed to providing high quality solar products, solar system solutions and services to customers around the world. As a leading PV project developer and manufacturer of solar modules with over 26 GW deployed around the world since 2001, Canadian Solar Inc. is one of the most bankable solar companies worldwide.

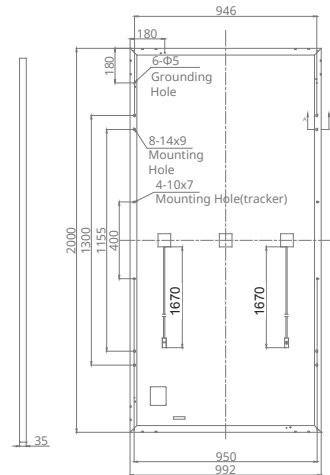
* For detailed information, please refer to Installation Manual.

CANADIAN SOLAR INC.

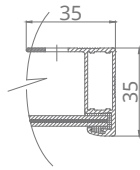
3000 Oak Road, Suite 400, Walnut Creek, CA 94597, USA | www.canadiansolar.com/na | sales.us@canadiansolar.com

ENGINEERING DRAWING (mm)

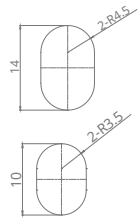
Rear View



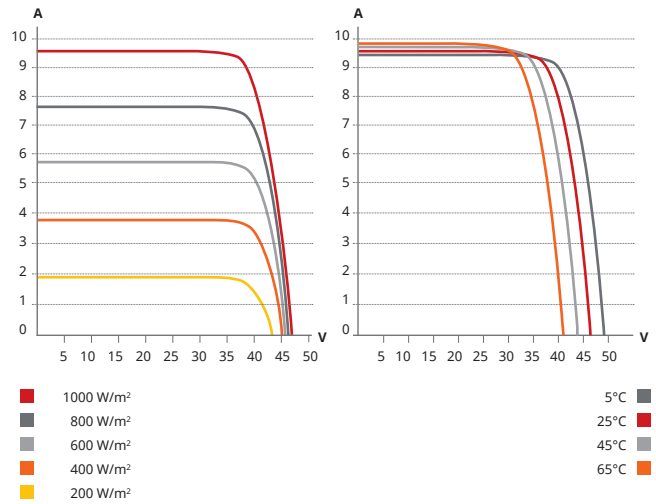
Frame Cross Section A-A



Mounting Hole



CS3U-355P-AG / I-V CURVES



ELECTRICAL DATA | STC*

CS3U	350P-AG	355P-AG	360P-AG	365P-AG
Nominal Max. Power (Pmax)	350 W	355 W	360 W	365 W
Opt. Operating Voltage (Vmp)	39.2 V	39.4 V	39.6 V	39.8 V
Opt. Operating Current (Imp)	8.94 A	9.02 A	9.10 A	9.18 A
Open Circuit Voltage (Voc)	46.6 V	46.8 V	47.0 V	47.2 V
Short Circuit Current (Isc)	9.51 A	9.59 A	9.67 A	9.75 A
Module Efficiency	17.64%	17.89%	18.15%	18.40%
Operating Temperature	-40°C ~ +85°C			
Max. System Voltage	1500V (IEC/UL) or 1000V (IEC/UL)			
Module Fire Performance	TYPE 3 / Type 13 (UL 1703) or CLASS A (IEC61730)			
Max. Series Fuse Rating	30 A			
Application Classification	Class A			
Power Tolerance	0 ~ + 5 W			

* Under Standard Test Conditions (STC) of irradiance of 1000 W/m², spectrum AM 1.5 and cell temperature of 25°C.

ELECTRICAL DATA | NMOT*

CS3U	350P-AG	355P-AG	360P-AG	365P-AG
Nominal Max. Power (Pmax)	260 W	264 W	268 W	271 W
Opt. Operating Voltage (Vmp)	36.2 V	36.4 V	36.6 V	36.8 V
Opt. Operating Current (Imp)	7.18 A	7.25 A	7.31 A	7.38 A
Open Circuit Voltage (Voc)	43.7 V	43.9 V	44.1 V	44.3 V
Short Circuit Current (Isc)	7.67 A	7.74 A	7.80 A	7.87 A

* Under Nominal Module Operating Temperature (NMOT), irradiance of 800 W/m², spectrum AM 1.5, ambient temperature 20°C, wind speed 1 m/s.

* The specifications and key features contained in this datasheet may deviate slightly from our actual products due to the on-going innovation and product enhancement. Canadian Solar Inc. reserves the right to make necessary adjustment to the information described herein at any time without further notice.

MECHANICAL DATA

Specification	Data
Cell Type	Poly-crystalline, 156.75 x 78.38 mm
Cell Arrangement	144 [2X (12 X 6)]
Dimensions	2000 X 992 X 35 mm (78.7 X 39.1 X 1.38 in)
Weight	26.5 kg (58.4 lbs)
Front / Back Glass	2.0 mm heat strengthened glass
Frame	Anodized aluminium alloy
J-Box	IP68, 3 diodes
Cable	4 mm² (IEC), 12 AWG (UL)
Cable Length	1670 mm (65.7 in)
Connector	T4 series
Per Pallet	30 pieces
Per Container (40' HQ)	660 pieces

TEMPERATURE CHARACTERISTICS

Specification	Data
Temperature Coefficient (Pmax)	-0.37 % / °C
Temperature Coefficient (Voc)	-0.29 % / °C
Temperature Coefficient (Isc)	0.05 % / °C
Nominal Module Operating Temperature	42 ± 3°C

PARTNER SECTION

