




# HiDM

## HIGH DENSITY MONO PERC MODULE




### 325 W ~ 340 W

CS1H-325 | 330 | 335 | 340MS (IEC1500 V)  
CS1H-325 | 330 | 335 | 340MS (IEC1000 V)

#### MORE POWER

-  Maximize the light absorption area, module efficiency up to 20.16 %
-  Low NMOT: 42 ± 3 °C  
Low temperature coefficient (Pmax): -0.37 % / °C
-  Better shading tolerance

#### MORE RELIABLE

-  Lower internal current, lower hot spot temperature
-  Cell crack risk limited in small region, enhance the module reliability
-  Heavy snow load up to 5400 Pa, wind load up to 2400 Pa



**linear power output warranty**



**product warranty on materials and workmanship**

#### MANAGEMENT SYSTEM CERTIFICATES\*

ISO 9001:2015 / Quality management system  
ISO 14001:2015 / Standards for environmental management system  
OHSAS 18001:2007 / International standards for occupational health & safety

#### PRODUCT CERTIFICATES\*

IEC 61215 / IEC 61730: VDE / CE / CEC AU  
UL 1703 / IEC 61215 performance: CEC listed (US) / FSEC (US Florida)  
UL 1703: CSA / IEC61701 ED2: VDE / IEC62716: VDE  
Take-e-way



\* We can provide this product with special BOM specifically certified with salt mist, and ammonia tests. Please talk to our local technical sales representatives to get your customized solutions.

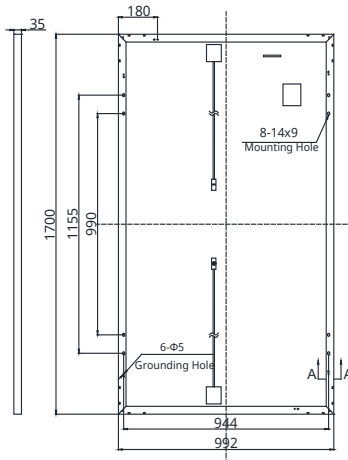
**CANADIAN SOLAR INC.** is committed to providing high quality solar products, solar system solutions and services to customers around the world. No. 1 module supplier for quality and performance/price ratio in IHS Module Customer Insight Survey. As a leading PV project developer and manufacturer of solar modules with over 30 GW deployed around the world since 2001.

#### CANADIAN SOLAR INC.

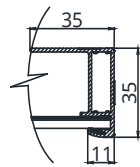
Canadian Solar MSS (Australia) Pty Ltd., 44 Stephenson St, Cremorne VIC 3121, Australia  
support@canadiansolar.com, www.canadiansolar.com/au

## ENGINEERING DRAWING (mm)

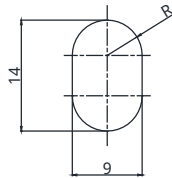
### Rear View



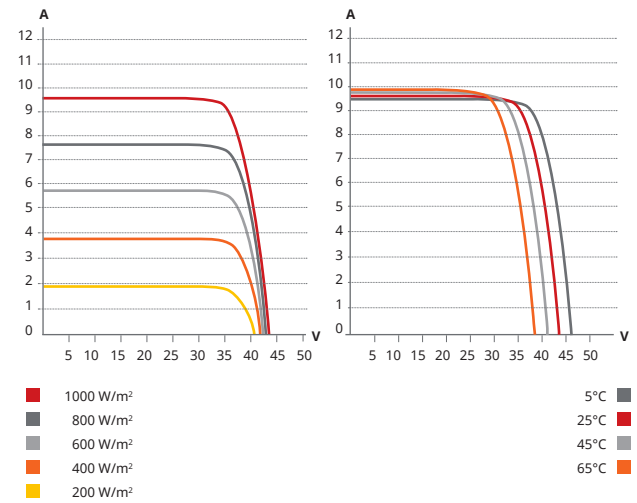
### Frame Cross Section A-A



### Mounting Hole



## CS1H-330MS / I-V CURVES



## ELECTRICAL DATA | STC\*

CS1H	325MS	330MS	335MS	340MS
Nominal Max. Power (Pmax)	325 W	330 W	335 W	340 W
Opt. Operating Voltage (Vmp)	35.8 V	36.0 V	36.2 V	36.4 V
Opt. Operating Current (Imp)	9.09 A	9.18 A	9.27 A	9.35 A
Open Circuit Voltage (Voc)	43.4 V	43.5 V	43.6 V	43.7 V
Short Circuit Current (Isc)	9.58 A	9.65 A	9.73 A	9.81 A
Module Efficiency	19.27%	19.57%	19.86%	20.16%
Operating Temperature	-40°C ~ +85°C			
Max. System Voltage	1500V (IEC) or 1000V (IEC/UL)			
Module Fire Performance	TYPE 1 (UL 1703) or CLASS C (IEC 61730)			
Max. Series Fuse Rating	20 A			
Application Classification	Class A			
Power Tolerance	0 ~ + 5 W			

\* Under Standard Test Conditions (STC) of irradiance of 1000 W/m<sup>2</sup>, spectrum AM 1.5 and cell temperature of 25°C. Measurement uncertainty: ±3 % (Pmax).

## MECHANICAL DATA

Specification	Data
Cell Type	Mono-crystalline
Dimensions	1700 × 992 × 35 mm (66.9 × 39.1 × 1.38 in)
Weight	19.2 kg (42.3 lbs)
Front Cover	3.2 mm tempered glass
Frame	Anodized aluminium alloy
J-Box	IP67, 3 bypass diodes
Cable	4.0 mm <sup>2</sup> (IEC), 12 AWG (UL)
Cable Length (Including Connector)	1350 mm (53.1 in)
Connector	T4 series (MC4 series is available)
Per Pallet	30 pieces
Per Container (40' HQ)	780 pieces

## ELECTRICAL DATA | NMOT\*

CS1H	325MS	330MS	335MS	340MS
Nominal Max. Power (Pmax)	242 W	246 W	250 W	254 W
Opt. Operating Voltage (Vmp)	32.7 V	32.8 V	33.0 V	33.2 V
Opt. Operating Current (Imp)	7.42 A	7.50 A	7.57 A	7.64 A
Open Circuit Voltage (Voc)	40.8 V	40.9 V	41.0 V	41.1 V
Short Circuit Current (Isc)	7.73 A	7.78 A	7.84 A	7.91 A

\* Under Nominal Module Operating Temperature (NMOT), irradiance of 800 W/m<sup>2</sup>, spectrum AM 1.5, ambient temperature 20°C, wind speed 1 m/s.

## TEMPERATURE CHARACTERISTICS

Specification	Data
Temperature Coefficient (Pmax)	-0.37 % / °C
Temperature Coefficient (Voc)	-0.29 % / °C
Temperature Coefficient (Isc)	0.05 % / °C
Nominal Module Operating Temperature	42±3 °C

## PARTNER SECTION



The specifications and key features contained in this datasheet may deviate slightly from our actual products due to the on-going innovation and product enhancement. Canadian Solar Inc. reserves the right to make necessary adjustment to the information described herein at any time without further notice. Please be kindly advised that PV modules should be handled and installed by qualified people who have professional skills and please carefully read the safety and installation instructions before using our PV modules.

## CANADIAN SOLAR INC.

Canadian Solar MSS (Australia) Pty Ltd., 44 Stephenson St, Cremorne VIC 3121, Australia  
support@canadiansolar.com, www.canadiansolar.com/au